



NICK  
CHAMPION

PROPERTY | AUCTIONS | AGRICULTURE | PROFESSIONAL

**CATALOGUE OF  
THE TENBURY & DISTRICT  
40<sup>TH</sup> ANNUAL ROVING AUCTION OF  
*ABOUT 822.75 ACRES  
OF STANDING STRAW  
& 18.75 ACRES OF GROWING CROPS***

**414.25 ACRES WHEAT STRAW**

**297.25 ACRES BARLEY STRAW**

**93.5 ACRES OAT STRAW**

**17.75 ACRES TRITICALE STRAW**

*ALSO*

**8.25 ACRES WINTER WHEAT CROP**

**10.5 ACRES WINTER BARLEY CROP**

***TO BE HELD AT THE FARMS  
ON THURSDAY 3<sup>RD</sup> JULY 2025  
FROM 4.00PM PROMPT***

**NICK CHAMPION LTD**

16 Teme Street, Tenbury Wells, Worcestershire, WR15 8BA

Tel: 01584 810555 | Email: [info@nickchampion.co.uk](mailto:info@nickchampion.co.uk)

[www.nickchampion.co.uk](http://www.nickchampion.co.uk)



**These Conditions supplement the General Conditions of Sale. In the case of any amendment or contradiction, the details contained in these Special Conditions overrule the General Conditions.**

1. All Lots are put up for sale subject to any reserve price imposed by the Seller.
2. Buyers are deemed to have inspected the Lot(s) and satisfied themselves with regard to their description, condition and location before bidding.
3. The Seller will notify each buyer when the straw which he has purchased has been combined.
4. The Buyer will not be allowed to remove any straw until payment has been received in full & cheques cleared.
5. The Buyer will be required to bale, load and carry away the straw at this own expense. No barn space is available, and no help can be given in loading.
6. All straw is to be removed within the period allowed as stated at time of sale.
7. The Buyer will indemnify the Seller for any damage that may be caused by removal of the straw to gates, fences, hedges, fixed equipment etc. and to all third parties.
8. Upon failure to comply with the clearance date the purchase money will be forfeited, and the Seller will be free to dispose of the straw in any manner to suit himself without compensation to the Buyer.
9. The Auctioneers intend to sell in the order lotted and as described in the Catalogue but reserve the right to make any alteration if so requested by a Seller.
10. All acreages are approximate, generally to the nearest 0.25 acre down and have been converted from estimated planted hectarages and as taken from the Rural Land Register. No claims or counterclaims will be considered for an error of less than 1 acre per lot. **Allowances where necessary have been applied for uncropped areas, bare patches, & muck tumps within fields.**

#### **VIEWING**

Lot cards will if appropriate be attached to field gates. Purchasers are advised to view the Lots prior to sale. ***All Lots will be auctioned at the meeting place on farm and not at each field gate.***

#### **COMMISSION BIDS**

The Auctioneers will accept commission and proxy bids from purchasers unable to attend the sale if received in writing prior to the sale.

#### **PAYMENT**

All lots are to be paid for in full at the fall of the hammer. Debit card & BACS payments accepted.

#### **BLACK GRASS**

**To help try and avoid the spread of black grass, purchasers/contractors must thoroughly clean balers before entering each field.**

#### **CLEARANCE**

All Lots are to be baled, and the straw cleared **within 7 days** of combining, unless otherwise stated at the time of sale.

**\*\*\* PLANS: SEE ATTACHED FIELD PLANS FOR IDENTIFICATION OF LOTS**

**By direction of D E Ayres & Co – Tel: 01584 711130**

**Situated at Church House Farm, Middleton on the Hill, SY8 4BE**

***Meet at Church Farm buildings at 4.00 pm for Lots 1 -> 5***

***What3words: ///mandates.rolled.inspects***

**Lot 1: 6 Acres Winter Barley Straw**

**Lot 2: 30 Acres Winter Wheat & Spring Barley Straw**

**Lot 3: 20 Acres Winter Wheat (90%) & Spring Wheat (10%) Straw**

**Lot 4: 50 Acres Winter Wheat & Spring Wheat Straw**

**Lot 5: 30 Acres Winter Wheat (45%) & Spring Barley (55%) Straw (low level of black grass)**

Access off farm tracks, straw walker combine, black grass free except Lot 5.

**By direction of S E & B S Morgan – Mob: 07813 295410**

**Situated at New House Farm, Middleton, Little Hereford, SY8 4LQ**

***Meet at New House Farm track at 4.30 pm for Lots 6 -> 8***

***What3words: ///aced.eyelid.zooms***

**Lot 6: 26 Acres Spring Barley Straw**

**Lot 7: 21 Acres Spring Barley Straw**

**Lot 8: 17 Acres Spring Barley Straw**

Access off farm track, black grass free.

**By direction of Bickley House Farm – Tel: 01584 781230 Mob: 07714 280661**

**Situated at Bickley House Farm, WR15 8LT & Oxnalls Farm, Newnham Bridge, WR15 8LP**

***Meet at Bickley House Farm buildings at 5.00pm for Lots 9 -> 18***

***What3words: ///cook.wooden.regal***

**Lot 9: 17 Acres Winter Barley Straw**

Access off farm track

**Lot 10: 11 Acres Winter Oat Straw**

Access off Oxnalls Farm track

**Lot 11: 10 Acres Winter Oat Straw**

Access off farm track

**Lot 12: 7.5 Acres Winter Oat Straw**

Access off farm track

**Lot 13: 11 Acres Winter Oat Straw**

Access off farm track

**Bickley House Farm continued**

<b>Lot 14:</b>	<b>11.5 Acres Winter Oat Straw</b>	Access off farm track
<b>Lot 15:</b>	<b>8.5 Acres Winter Wheat Straw</b>	Access off farm track
<b>Lot 16:</b>	<b>6.5 Acres Spring Wheat Straw</b>	Access via farm buildings
<b>Lot 17:</b>	<b>14 Acres Spring Wheat Straw</b>	Access off farm track
<b>Lot 18:</b>	<b>9.5 Acres Spring Wheat Straw</b>	Access off farm track

All fields black grass free.

**By direction of B & J Yarnold – Mob: 07855 157491**

**Situated at Puddleford, Orleton Lane, Eastham, WR6 6SX**

***Meet at field gate on Orleton Lane at 5.45pm for Lots 19 -> 21.***

***What3words: ///nights.tastings.remembers***

<b>Lot 19:</b>	<b>25 Acres Winter Wheat</b>	Access off lane, top side
<b>Lot 20:</b>	<b>12.5 Acres Winter Wheat</b>	Access off lane, small river field
<b>Lot 21:</b>	<b>37 Acres Winter Wheat</b>	Access off lane, big river field

Lots 19/21 black grass free.

**Situated at Church Farm, Hanley William, WR15 8QS**

***Meet at field gate on New Road, opposite the Fox Inn at 6.00pm for Lots 22 & 23***

***What3words: ///pints.remind.scribbled***

<b>Lot 22:</b>	<b>17.5 Acres Winter Barley Straw (excludes spring barley margin)</b>	Access off New Road
<b>Lot 23:</b>	<b>18 Acres Winter Barley Straw (excludes spring barley margin)</b>	Access via Lot 22

Lots 22/23 black grass free.

**By direction of S & E & P I Kerby – Mob: 07794 714211/07877 680944**

**Situated at Hill Farm, Hanley Childe, WR15 8QN**

***Meet at the farm drive access at 6.15pm for Lots 24 & 25***

***What3words: ///nothing.render.scrictest***

<b>Lot 24:</b>	<b>8.25 Acres Winter Wheat **Crop** (Typhoon)</b>	Access off farm drive
<b>Lot 25:</b>	<b>10.5 Acres Winter Barley ** Crop** (Hibrid KWS Ferris)</b>	Access off lane

**By direction of B & J Yarnold – Mob: 07855 157491**

**Situated at Lodge Farm, Hanley Broadheath, WR15 8QS**

***Meet at Lodge Farm buildings at 6.30pm for Lots 26 -> 28***

***What3words: ///luxury.exposing.represent***

**Lot 26: 10 Acres Winter Wheat Straw (in 2 fields)**

**Lot 27: 7.5 Acres Winter Wheat Straw (in 2 fields)**

**Lot 28: 12.5+ Acres Winter Wheat Straw (excluding spring barley margin)**

Access off Lodge Farm track, all fields rogued for black grass

**By direction of A.B. Read & Son – Tel: 01885 483666 Mob: 07974301041**

**Situated at Adamswood, Upper Sapey, WR6 6EZ**

***Meet at Lodge Farm buildings at 6.30pm for Lot 29***

***What3words: ///puddings.distanced.sectors (field gate)***

**Lot 29: 12 Acres Winter Wheat Straw**

Access off B4204

Lot 29 black grass free

**By direction of B & J Yarnold – Mob: 07855 157491**

**Situated at Aytons Heath Barn, Clifton-on-Teme, WR6 6EW**

***Meet at Aytons Heath Barn drive at 7.00pm for Lots 30 & 31***

***What3words: ///sprayed.chase.applauded***

**Lot 30: 13 Acres Winter Wheat Straw**

**Lot 31: 10 Acres Winter Wheat Straw**

Access off B4204/farm drive, Lots 30 & 31 black grass free

**By direction of A.B. Read & Son – Tel: 01885 483666 Mob: 07974301041**

**Situated at Harpley, Worcestershire, WR6 6HG**

***Meet at Harpley Lane off B4203 at 7.15pm for Lots 32 -> 35***

***What3words: ///even.gifts.haggling***

**Lot 32: 10 Acres Winter Wheat Straw**

Access off Harpley Lane

**Lot 33: 18.5 Acres Winter Wheat Straw (in 2 fields).**

Access off B4203 to south of Pitchard Close

**Lot 34: 23 Acres Winter Wheat Straw (in 3 fields).**

Access off Harpley Lane

**Lot 35: 18.5 Acres Winter Wheat Straw (in 2 fields).**

Access off Hollybush Lane

Lots 32/35 black grass free

By direction of A.B. Read & Son – Tel: 01885 483666 Mob: 07974301041

Situated at Upper Sapey, Worcestershire, WR6 6XT

**Meet at Harpley Lane at 7.15pm for Lot 36**

**What3words: ///argue.called.broker (field entrance)**

**Lot 36: 8 Acres Winter Wheat Straw**

Access off B4203

Lot 36 black grass free

By direction of J W Williams & Sons – Mob: 07866 882923

Situated at Upper Hollin Farm, Pensax, WR6 6AJ

**Meet at Upper Hollin Farm buildings at 7.45pm for Lots 37 -> 47**

**What3words: ///shapes.tadpole.hence**

<b>Lot 37:</b>	<b>13.75 Acres Winter Barley Straw</b>	Access off B4202 or via farmyard
<b>Lot 38:</b>	<b>23.25 Acres Winter Barley Straw</b>	Access via drive to wind pump across barley field
<b>Lot 39:</b>	<b>13 Acres Winter Barley Straw</b>	Access off Pensax lane by Council houses
<b>Lot 40:</b>	<b>17.75 Acres Winter Triticale Straw</b>	Access off Menith Wood lane by Stildon Cottages
<b>Lot 41:</b>	<b>7.75 Acres Winter Wheat Straw</b>	Access off drive to wind pump
<b>Lot 42:</b>	<b>12.5 Acres Winter Wheat Straw</b>	Access via Birches Bungalow drive
<b>Lot 43:</b>	<b>9.75 Acres Winter Wheat Straw</b>	Access via Birches Bungalow drive
<b>Lot 44:</b>	<b>15.75 Acres Winter Wheat Straw</b>	Access via track off Pensax lane
<b>Lot 45:</b>	<b>10 Acres Spring Barley Straw</b>	Access off Pensax lane next to Council houses
<b>Lot 46:</b>	<b>19 Acres Spring Barley Straw</b>	Access via Lot 45
<b>Lot 47:</b>	<b>8.25 Acres Spring Barley Straw</b>	Access via Lot 45

By direction of A G Hingley – Mob: 07974 387304

Situated at Lower Hollin Farm, Pensax, WR6 6AJ

**Meet at Upper Hollin Farm buildings at 7.45pm for Lots 48 -> 51**

**What3words: ///shapes.tadpole.hence**

<b>Lot 48:</b>	<b>17 Acres Winter Barley</b> Straw (black grass free)	Access off Porchbrook Road to Rock
<b>Lot 49:</b>	<b>19 Acres Winter Barley</b> Straw	Access off track off Porchbrook Road
<b>Lot 50:</b>	<b>20 Acres Spring Barley</b> Straw	Access off Porchbrook Road to Rock
<b>Lot 51:</b>	<b>14 Acres Winter Wheat</b> Straw	Access off B4202 opposite Upper Hollins

By direction of Ben Nott – Tel: 01299 266631 Mob: 07494 877748

Situated at Gorst Hill Farm, Rock, DY14 9YJ

**Meet at field entrances on A456 at 8.15pm for Lots 52 & 53**

**What3words: ///building.lessening.follow**

<b>Lot 52:</b>	<b>12.25 Acres Spring Oat</b> Straw	Access off A456 or Pound Bank
<b>Lot 53:</b>	<b>30.25 Acres Spring Oat</b> Straw	Access off A456 or Pound Lane

**\*\*REFRESHMENTS will generously be provided for salegoers by the Williams Family at Upper Hollin Farm\*\***

**\*\*Don't miss the TAS Live Lamb/Carcass competition at Hill Top Farm, Sutton, Tenbury Wells by kind permission of Rob & Gill Handley on Monday 28<sup>th</sup> July @ 6.00pm with Bar & BBQ. Livestock schedules online: [www.tenburyshow.co.uk](http://www.tenburyshow.co.uk) & TENBURY SHOW on Saturday 2<sup>nd</sup> August!!**

**TENBURY SHEEP SALE - Saturday 16<sup>th</sup> August**

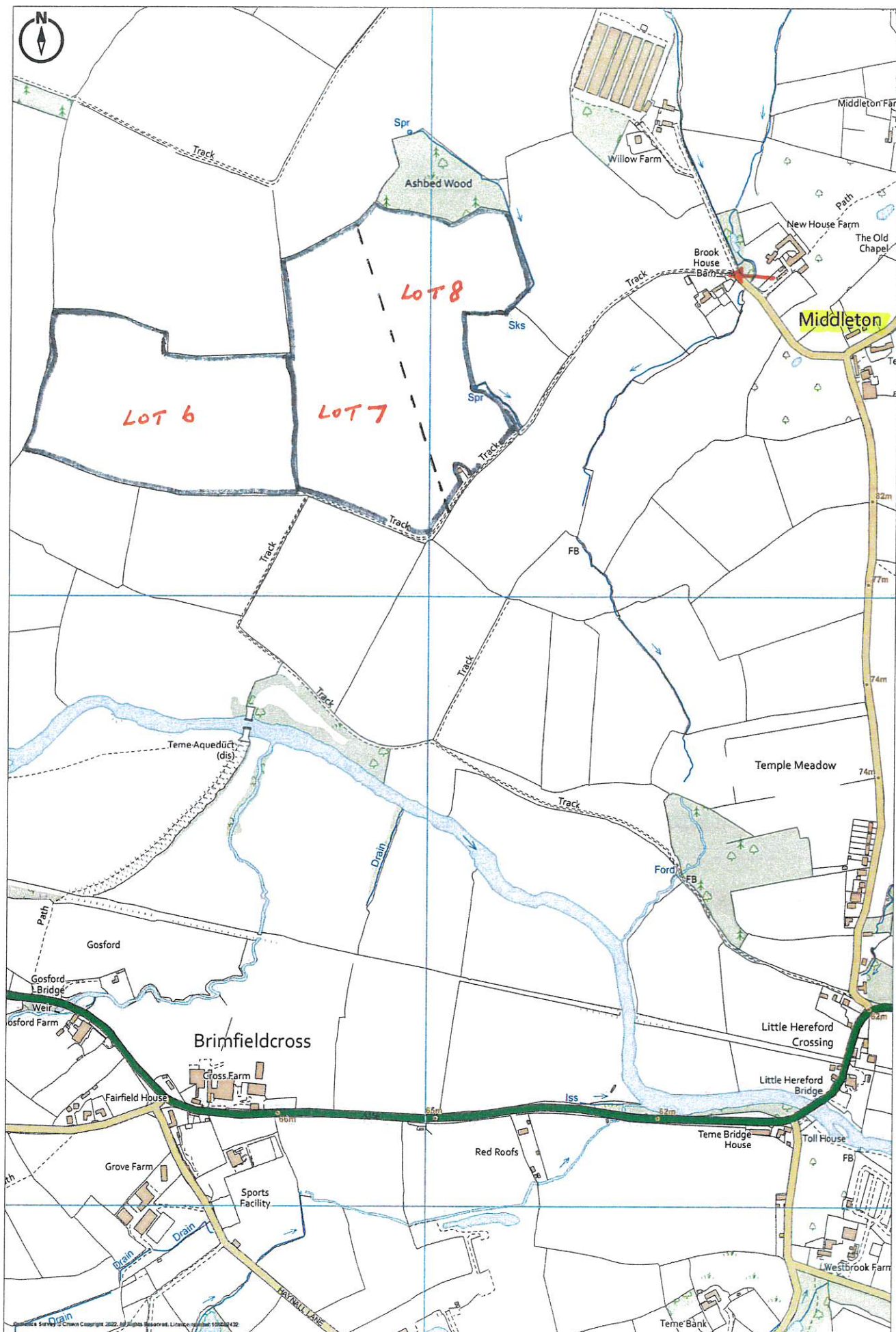
Prize sale of store lambs & Suffolk x, Texel x & Mule yearling breeding ewes.  
Cull & grazing ewes. Breeding rams.

Catalogue entries are invited now! Please enter early for penning & advertising.  
Please support your local premium sale.

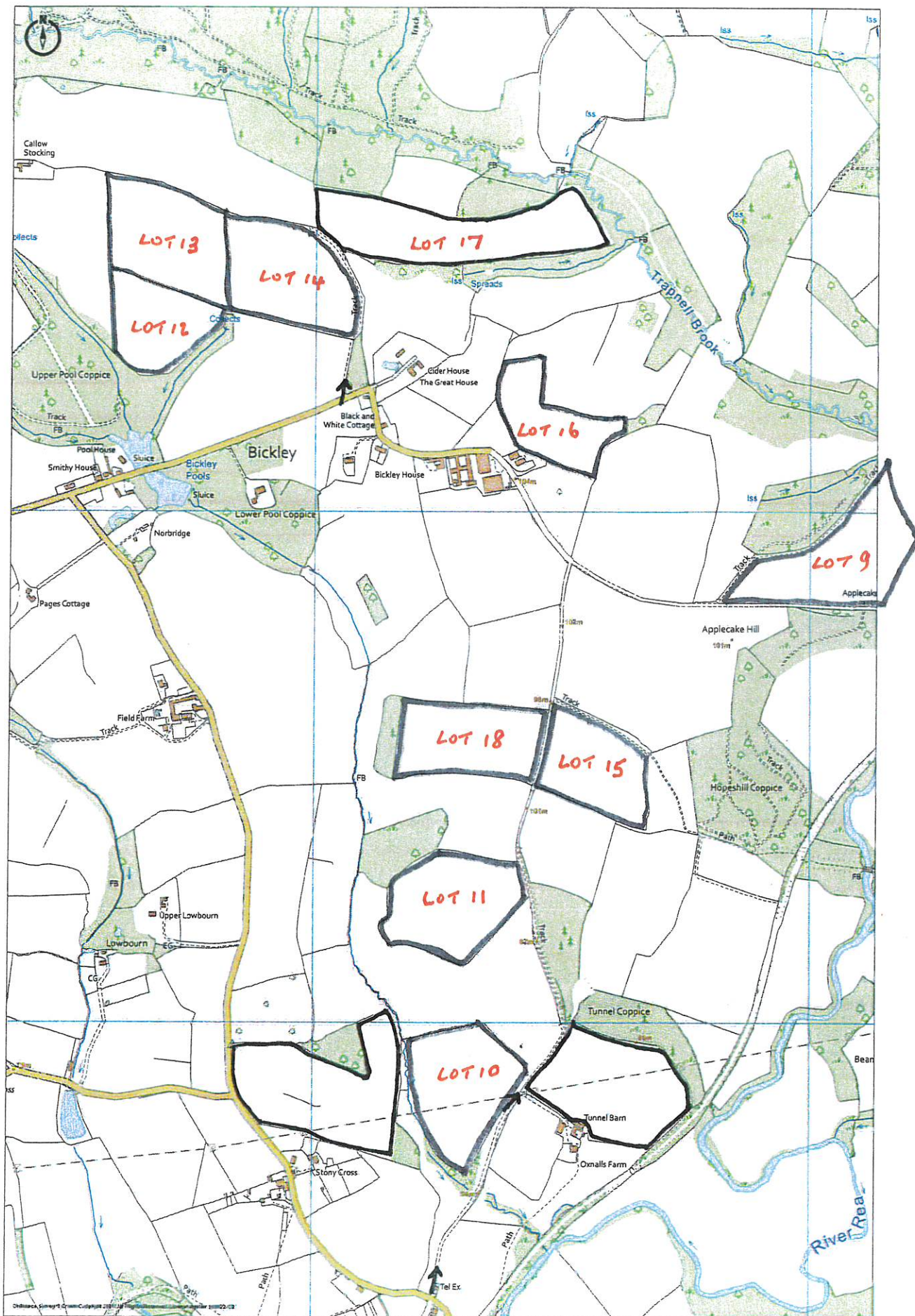










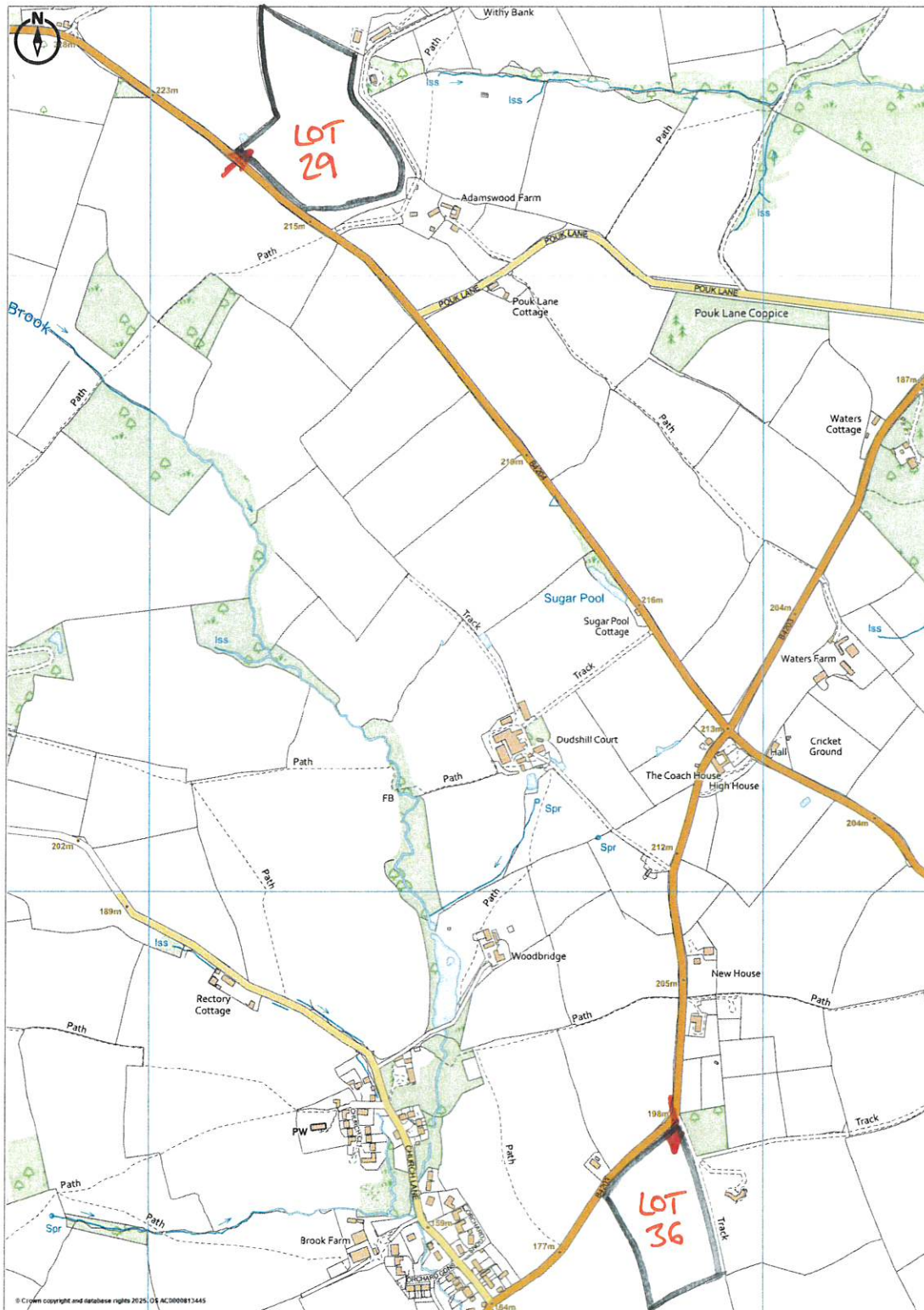


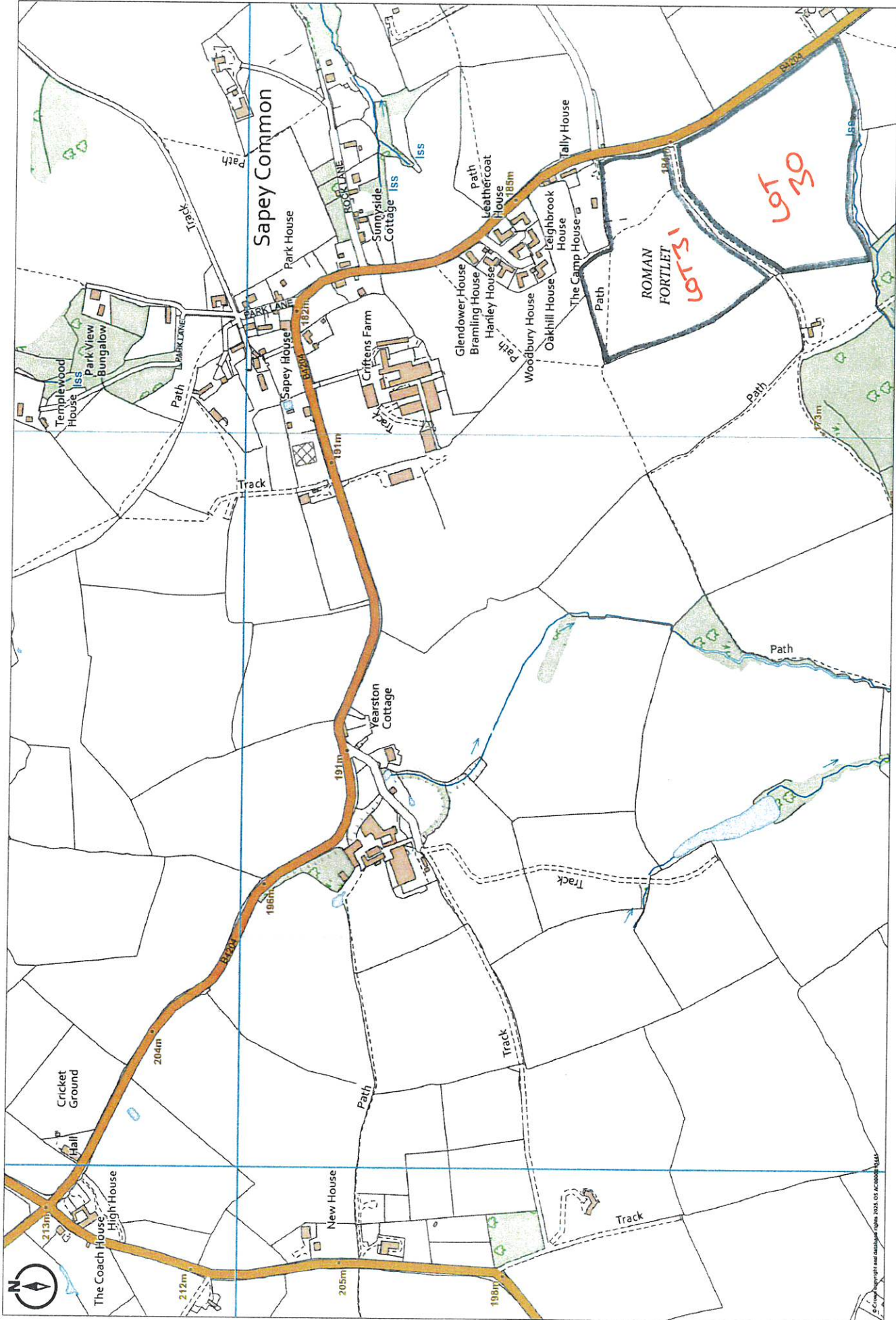




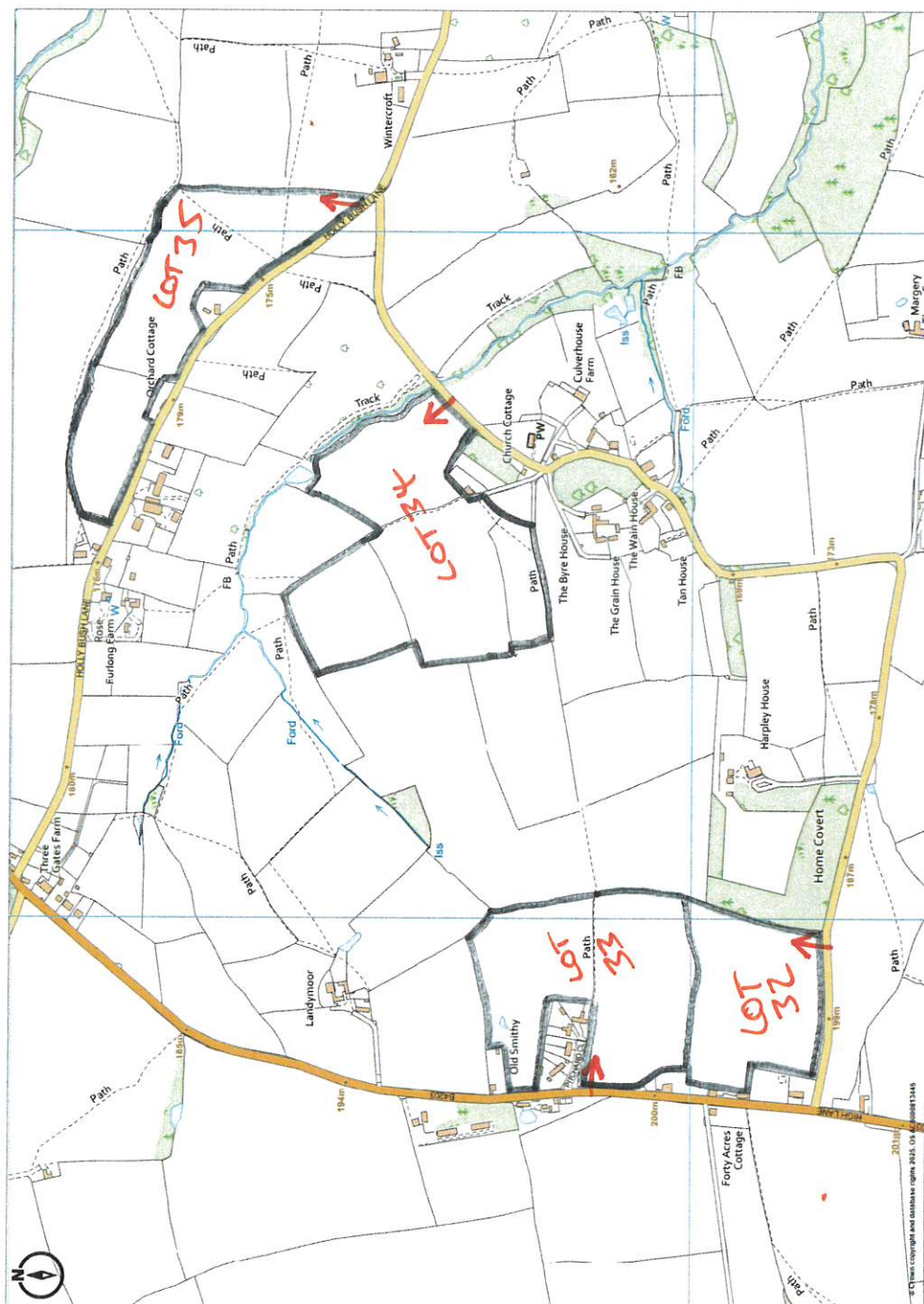












**Promap** © Crown Copyright and database rights 2025. OS AC0000813445  
 LANDMARK INFORMATION Plotted Scale - 1:10000. Paper Size - A4



# STANDING STRAW

